



Forward Thinking, High Achieving.

# MEADOW HILL MIDDLE SCHOOL

Our proposal addresses critical needs, including ADA compliance, increasing student enrollment, safety concerns, collaborative learning environments and 21st century technology infrastructure.



A systemwide initiative to develop schools that work smarter for our students.

MEET YOUR  
SMART SCHOOLS  
TEAM

The Meadow Hill Middle School team put months into this process. We appreciate the input from students, parents, faculty, neighbors and the MCPS board. If you have questions or would like to get involved, we encourage you to visit [www.mcpsmt.org/meadowhill](http://www.mcpsmt.org/meadowhill) or contact Principal Christina Stevens at [cmstevens@mcps.k12.mt.us](mailto:cmstevens@mcps.k12.mt.us).

TEAM MEMBER CORE

Zach Tyree, Student  
Brandee Tyree, Parent  
Wendy Wilson, Teacher  
Patti Folk, Classified  
Christina Stevens, Administrator  
Matt Clausen, Administrator  
Tijon Morin, Business

TEAM MEMBER  
EXPANDED

Ann Pinsoneault, Teacher  
Steven Haas, Classified  
Holly Haslam, Parent  
Avery Haslam, Student  
Tom Stevens, Business

21ST CENTURY NEEDS

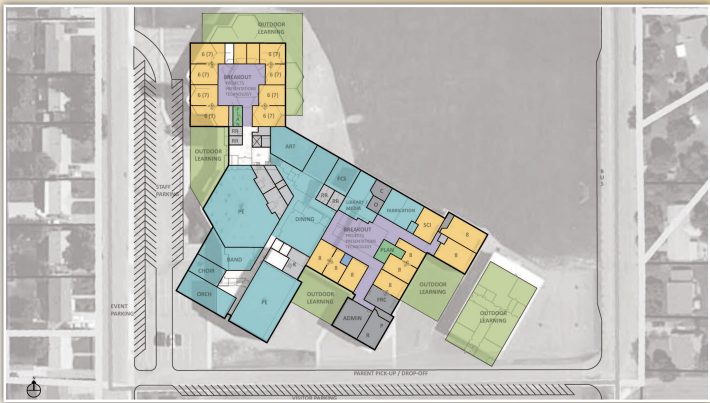
Built in the 1960s, Meadow Hill Middle School's continued expanding enrollment and limited space are neither conducive to 21st century learning nor ADA compliant. In addition, the main entrance structure, drop-off/pickup areas and bus lanes do not support the safety of our students, staff, parents and visitors.

In order to address these key issues, Meadow Hill plans to demolish outdated portions of the school, moderately expand, reconfigure some spaces to improve learning, and improve outdoor spaces for both learning and recreation.

EXPANDING MEADOW HILL MIDDLE SCHOOL

Our proposed option combines both expansion and light touch to meet the needs of students and staff both today and in the future. The plan focuses on key issues to provide dynamic collaborative spaces, improved entrance and bus lanes, and increased technology access. When complete, Meadow Hill will be a smarter school in many ways, including:

- ADA compliance throughout facility.
- Secure and safe front entrance with increased supervision.
- A safer drop-off/pickup zone with less traffic congestion.
- Reconfigured lunchroom provides additional seating to accommodate students' nutritional and emotional needs.
- Relocated Special Education rooms, to central area, and improved collaborative space for teachers.
- Classrooms restructured for collaborative learning areas for students and teams.
- Technology infrastructure improvements allow for 21st century learning — including STEM programs from Project Lead the Way, blended learning classrooms, and student access to technology for learning throughout the building.



OUR TEAM'S RECOMMENDED OPTION



OPTION E-2 EXPAND:

- Eliminate modular spaces.
- Improve classroom space.
- Reconfigure and enlarge classroom.
- Reconfigure drop-off area.
- Technology improvements.

- Replace roof.
- Boiler and heat distribution.
- Safety and security improvements.
- Create outdoor play and learning areas.

SECURITY

Modify facility to create obvious main entry, secure waiting area and ability to observe visitors approaching the building. Subdivide the building into secure zones with electronically activated door closers.

TECHNOLOGY

Develop high-speed/high-volume fiber optic distribution to breakout spaces for projects, presentations and technology in each learning community, enhanced with robust wireless and hard-wired access points.

ENVIRONMENT

Install barn doors and garage doors with quality acoustical materials between learning areas and breakout areas for projects, presentations and technology. Create small learning communities for teams of teachers and students that include traditional classrooms as well as important support spaces for 1:1 tutoring, small groups, planning centers, storage, etc.

FACILITIES STRATEGIC PLAN

Site Area: 13.05 acres  
Parking Spaces: 60  
Building Square Footage  
Existing: 82,424  
Renovation: 10,000  
Demolish: 27,366  
New: 30,000  
Estimated Project Budget: \$9,984,252\*  
Replacement Cost: \$20,776,205  
Remaining Deferred Maintenance & Energy Project Costs: \$0  
Rental / Lease / Sale Income: None  
Current Enrollment: 480  
Future Peak Enrollment: 534  
Capacity: 650-750  
Accessible Capacity: 650-750  
Accessible / Permanent Capacity: 650-750

\*All costs are projected based on industry averages for building costs, sizes and land prices. Final project budget will be developed during the design phase.



## NOW IS THE TIME TO INVEST IN SMARTER SCHOOLS

Education has never been more important than it is today. Our students face international competition for scholarships and jobs, and an increasing pace of change that impacts their futures. Yet, while the need for quality education continues to increase, our schools are physically in decline.

At Missoula County Public Schools, we realize that we must change if we're to keep up academically and economically as a community. That's why we launched Smart Schools 2020. Led by teams from each school, the initiative assesses needs by facility and prioritizes those needs in light of achieving our goals of a 21st Century Educational Culture and of being fiscally responsible.

By addressing schools now we prevent further deterioration of facilities, better prepare for population growth and ensure our students continue to get the educational opportunities they need to succeed in school and beyond.

## THE SMART SCHOOLS PROCESS

### **SCHOOL CENTRIC:**

Criteria and preferred options were established for each school by a team of teachers, administrators, students and parents from that school, along with members of the Missoula community.

### **COLLABORATIVE:**

Alternatives were shared at public meetings at each school. In addition, surveys were sent out systemwide to vet priorities.

### **REALISTIC:**

Team recommendations were reviewed by the steering committee and the elected board of trustees before a bond measure was drafted.

### **PUBLIC:**

Everyone is invited to review options and weigh in. Final support for the initiative will be determined by public election in November 2015.



To get involved, please visit [www.mcpsmt.org/meadowhill](http://www.mcpsmt.org/meadowhill) or contact Principal Christina Stevens at [cmstevens@mcps.k12.mt.us](mailto:cmstevens@mcps.k12.mt.us).